

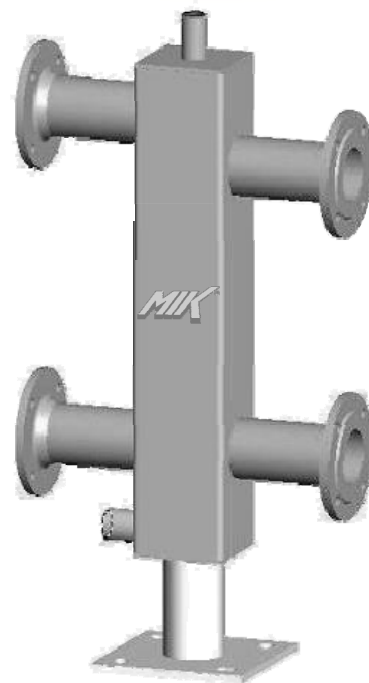
HYDRAULIC SEPARATORS

HW 100...500

up to 205 m³/h
up to 4600 kW

Hot water flow rate: up to 205 m³/h
Output at $\Delta t=20^{\circ}\text{C}$: up to 4600 kW

- Exchange chamber made of square tube
- Side connections for facing boiler and collector circuits
- Offset connections for improved bleeding
- Connection couplings for bleeding, temperature sensor and drainage
- Hydraulic separator is factory-tested for pressure and primed
- Max. operating pressure 6 bar
- Rock wool insulation with galvanised sheet steel jacket



Hydraulic separators HW 100...500

Type*	Connection dimensions	Hot water flow rate	Output at $\Delta T=20^{\circ}\text{C}$
<i>MIK</i> HW 100 or HW 100 R	DN 50	up to 6.5 m ³ /h	up to 150 kW
<i>MIK</i> HW 120 or HW 120 R	DN 65	up to 10.5 m ³ /h	up to 240 kW
<i>MIK</i> HW 160 or HW 160 R	DN 80	up to 14.5 m ³ /h	up to 350 kW
<i>MIK</i> HW 200 or HW 200 R	DN 100	up to 25 m ³ /h	up to 550 kW
<i>MIK</i> HW 250 or HW 250 R	DN 125	up to 37 m ³ /h	up to 850 kW
<i>MIK</i> HW 300 or HW 300 R	DN 150	up to 55 m ³ /h	up to 1250 kW
<i>MIK</i> HW 350 or HW 350 R	DN 200	up to 90 m ³ /h	up to 2050 kW
<i>MIK</i> HW 400 or HW 400 R	DN 250	up to 125 m ³ /h	up to 2800 kW
<i>MIK</i> HW 450 or HW 450 R	DN 250	up to 165 m ³ /h	up to 3750 kW
<i>MIK</i> HW 500 or HW 500 R	DN 300	up to 205 m ³ /h	up to 4600 kW

* Hydraulic separator with cleaning aperture and blind flange: type "R"